

# Trek™ Triton SMT Series Electronic Cleaners

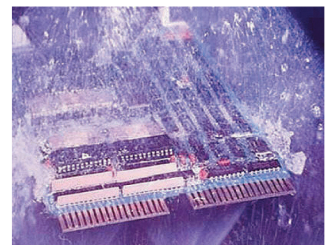
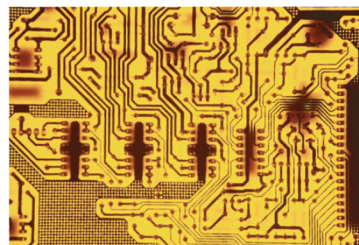
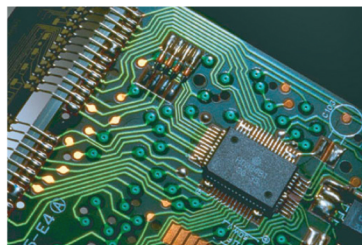
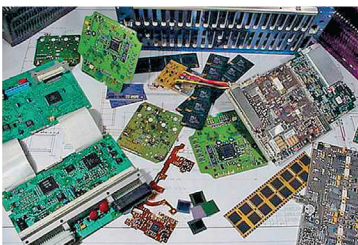


## *Inline Aqueous Electronics Assembly Cleaning System for Water-Only Applications*



### **Standard Features**

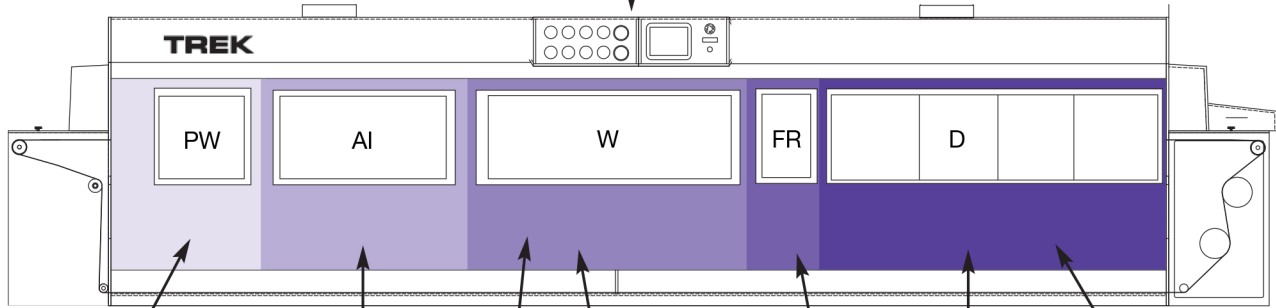
- Polypropylene Construction
- 14", 18", and 24" Belt Widths as Standard
- "Uni-Pass" Conveyor - Reduces Tank Contamination by Returning Conveyor Beneath Process Section
- Touch Screen Control Panel
- Redundant Over-Temp and Liquid Low Level Safety Protection
- Digital Temperature Control for Recirculating Tank Heat
- Slotted, Easy Draining Stainless Steel Conveyor Rail
- Removable Tank Screens
- Adjustable Spray Pressures
- Stainless Steel Recirculating Plumbing
- Optional Stainless Steel, High-Temp Dryer Module
- Utility Sink (Optional Stencil Sink)
- Full Tool-Less Access for Ease of Routine Maintenance
- Optional Water Treatment System for Closed Loop Rinse Operation (On-Board or Remote)
- Optional CE, UL Certification



**Trek™ Triton SMT is Ideally Suited for Electronic Assembly Cleaning.**



User Friendly Touch Screen Control Panel  
w/Allen Bradley PLC standard.



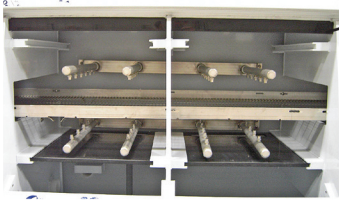
Prewash to Remove Solid Particulate and Excess Flux or Paste.

Air Isolation Module is an Anti-dragout Section that Prevents Forward Migration of Prewash Solution. Air for the Stainless Steel Knives is Supplied by the First Dry Stage Blower.

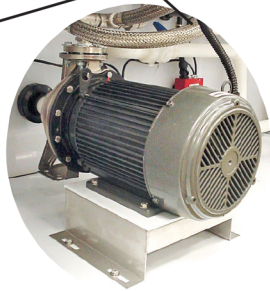
Recirculating Wash. Stainless Steel Plumbing. Adjustable Spray Pressures.

Final Rinse Spray Independent from Recirculating Rinse to Maintain Purity.

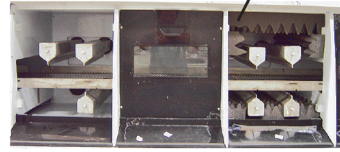
Dryer Module: Top and Bottom Stainless Steel Air Knives Powered by High Pressure Centrifugal Blower(s). High Temp Stainless Steel Dryer Module Optional.



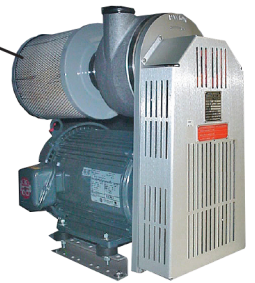
Typical Recirculating Spray Layout.



High Pressure/High Volume Stainless Steel Pumps in Recirculating Wash Stage.



Typical Dryer Zone Air Knife Layout.



Centrifugal High Pressure Blower(s) in Dryer Section.

### Triton SMT Plumbing Layout

