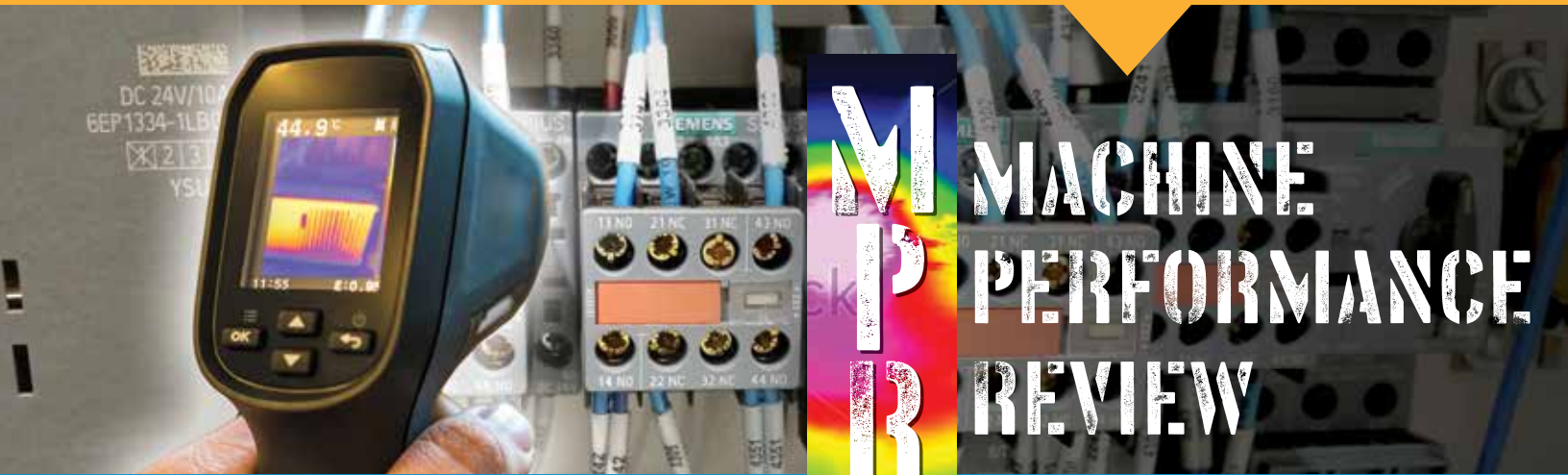


# RANSOHOFF



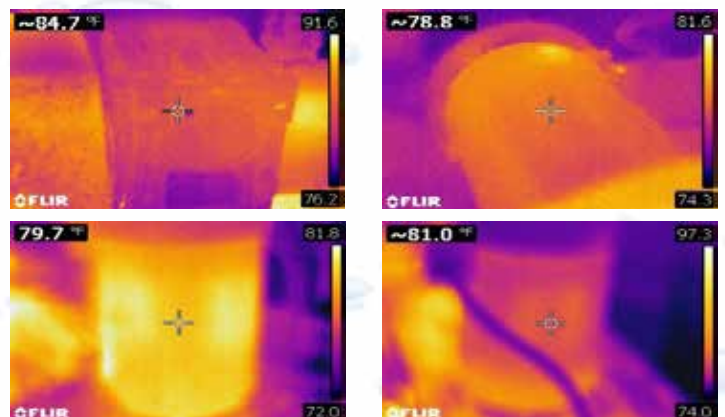
## MACHINE PERFORMANCE REVIEW

**Schedule an MPR today and keep your Ransohoff machines up and running productively, and predictably.**

**Today the old adage 'If it's not broke, don't fix it' doesn't carry much weight with most manufacturers.**

They recognize the potentially catastrophic effect of machine downtime due to repair, and many are taking a proactive approach and remedying predictive failure conditions before they develop into a significant, and costly, downtime event.

**The Machine Performance Review** is a new Ransohoff program that puts a powerful methodology, and advanced diagnostics tools, to work to identify, diagnose and repair components before a costly failure can develop. Depending on machine type and age, operation, utilization rate and other factors, a Machine Performance Review is generally performed either quarterly or semi-annually, and is available for all Ransohoff machine makes and models. The process is fast, non-invasive and thorough, and can result in a significant cost savings as compared to the cost of the downtime, lost production and repair that result from even one minor failure occurrence.



**The ultimate machine inspection tool.** Better yet, your Ransohoff service technician can apply powerful new FLIR thermal imaging technology to identify potential failure conditions that are typically undetectable with the naked eye or conventional diagnostic tools. FLIR thermal images can clearly reveal sources of energy loss, moisture intrusion and structural issues from overheating electrical and mechanical component.

A small investment in preventive maintenance today can pay off big downstream. Ready to schedule your regular Ransohoff Machine Performance Review?



**CLEANING TECHNOLOGIES GROUP**

RANSOHOFF • BLACKSTONE-NEY ULTRASONICS • CTG ASIA

For more information, cost analysis, and a quotation on your Machine Performance Review, contact:  
Call: 800-248-9274  
eMail: [MPR-Ransohoff@ctgclean.com](mailto:MPR-Ransohoff@ctgclean.com)  
Visit: [www.ctgclean.com/MPR](http://www.ctgclean.com/MPR)

[ctgclean.com](http://ctgclean.com) | 800.248.9274



**A Ransohoff Machine Performance Review is fast, thorough and non-invasive. Check it out:**



*Machine Performance Review*

Washer S/N: 5287  
 Customer:  
 Location:  
 Contact:

Type: RB-2  
 Date:  
 Phone:  
 Field Tech:



SUB-SYSTEM:		OK	NEEDS SERVICE	NOTES	Photos / Images
LOAD DOOR:	Seal condition	Y		Gasket needs replaced	
	Pneumatic Springs	Y			
	Window Seal			Signs of previous leak, none at present	
TANK DOOR GASKETS:	Check for leaks	Y			
	Is gasket firm	Y			
FILTER SCREENS:	Are they in place & clean	Y			
	Torque Limiter / Coupling	Y	N/A		
CARRIAGE DRIVE:	Lid Hinges	Y			
	Closer Rollers	Y			
	Is rotation smooth	Y			
	Is rotation quiet		78.8*		
	Motor Temp		84.7*		
	Gearbox temp	Y			
WASH PUMP: 106MTR	Vibration		47.3 psi		
	Pressure		79.7*		
	Motor Temp		5.7, 5.6, 5.6		
	Amps	Y			
RINSE PUMP: 109MTR	Vibration		41.5 psi		
	Pressure		81*		
	Motor Temp		5.5, 5.5, 5.7		
	Amps	Y			
BLOWER: 112MTR	Vibration		77.5*		
	Motor Temp		5.9, 6.5, 8		
	Amps	Y			
	Vibration		N/A		
Wash Heater	Inlet Air Filter				
	Belt condition / tension				
	Wiring condition		3.7, 23.8, 23.2		
Rinse Heater	Amperage				
	Wiring condition		23.4, 23, 23.6		
Blowoff Heater	Amperage				
	Wiring condition		3.4, 23.5, 23.7		
Control Panel	Terminal connections	Y			
	Overall condition	Y		Found breaker 205CB (rinse heat) to be unusually high temp, tightened loose line connections, temp dropped significantly	
Thermal scan					